

Westminster Presbyterian Church
103 E. Midland Street
Bay City, MI 48706

Address Service Requested



Non-Profit Org.
U.S. Postage
PAID
Bay City, MI
Permit No. 278

THE WESTMINSTER LOG

Meeting God in the midst of extremes

This year, the Gospel of Luke will guide us through Lent. Beginning with Jesus setting his face toward Jerusalem, our Lenten series flows through several familiar stories—the Good Samaritan, Mary and Martha, the fruitless fig tree, the Lost Sheep, Zacchaeus and more. Many of these stories are well-known in both sacred and secular imagination, carrying cultural relevance and lore.

Jesus’ ministry was rooted in relationships that disrupted the established social, political and religious divides of his time. As modern readers, we sometimes lose the “shock factor” behind Jesus’ words, as his teaching tactics likely felt extreme for those in his context. He describes a stigmatized Samaritan as a good neighbor. He emphasizes the value of one sheep in a herd of 100. He dines with a tax collector who amassed wealth through extortion. While dying on the cross, he tells a convicted criminal he will soon find paradise. In these narratives, Jesus intentionally highlights the cultural and political polarities of his time to emphasize the radical, inclusive and surprising love of God.

When we study these stories in their historical and cultural context, we see how they mirror the cultural and political divides many of us experience in our families, churches and communities today.



Lenten Bible Study

Sunday mornings
9 a.m. in the Conference Room

Thursday evenings
7 p.m. via Zoom

Devotional booklets with weekly readings are available in the church narthex or the church office. Also, this year we will again have the “card rings” available with daily inspirational thoughts and prayers.

This Lent, we’re invited to navigate the polarities in our lives with more faith, intention and openness to be transformed. Each weekly sub-theme explores two

supposed binaries—“faith & works” or “rest & growth,” or “grief & hope”—things we often consider to be opposing. However, as we explore these concepts within the scriptures, we find nuance and complexity. We find that these dichotomies are false. We might begin to see a full spectrum instead of black and white. We might find that God is present in between.

And so, this season, we’ll look beyond black and white binaries and easy answers. While we notice the dichotomies that define our lives, we also seek to imagine where God might be meeting us beyond the categories we create.

This Lent, we’re trusting that God shows up in shades of gray, rainbow hues, and everywhere in between.

MARCH 2025 ISSUE 196

WWW.WPCBC.ORG

The Westminster Log is published monthly by Westminster Presbyterian Church, 103 East Midland Street, Bay City, Michigan, 48706. Articles must be submitted by the fifteenth day of each month before publication unless otherwise noted. We reserve the right to edit submissions for content and space. The Westminster Log is formatted to be printed in color.

Visit us on Facebook:
Westminster Presbyterian
Church - Bay City



Office Hours:
Monday through Thursday
8:00 a.m. - 4:00 p.m.

E-mail: office@wpcbc.org
Phone: 989-686-1360

Pastor
Rev. Jamie Milton (ext. 204)
Parish Associate
Rev. Linda Williams (ext. 203)
Secretary
Bill Petzold (ext. 201)
Facilities Manager
Harold Miller (ext. 205)
Financial Administrator
Pat Foster (ext. 206)

March

Sundays

9:00 a.m. Bell Choir Rehearsal
for our Adults; the Bells play during Worship once a month

9:00 a.m. Sunday School
For children PreK-4th grade

9:00 a.m. Lenten Devotional Series
During this Lenten Season we are using the Wandering Heart Devotional.

9:30 a.m. Fellowship
Join us in Fellowship Hall for Coffee and Donuts and Conversation

10:00 a.m. Chime Choir
For Children K-4th grade

10:30 a.m. Worship
We're meeting God in the midst of extremes with the everything [in] between Lenten series. See more details on the front page and page 1.

11:30 a.m. Fellowship
Join us in the chapel for Coffee and Cookies and Conversation

5:00 p.m. Youth Bells
For Youth 5th-12th grade

5:30 p.m. Youth Dinner

6:00 p.m. Youth Group
For Youth 5th-12th grade

Office Hours

Monday – Thursday: 8:00 a.m. – 4:00 p.m.

Website: wpcbc.org

Join us on Facebook

Westminster Presbyterian Church - Bay City

Sunday	Monday
Happy Birthday Dianne Young Elizabeth Dore Kenneth Lange Colleen Schmidt Larry Pryce Chris Elzinga	
2 <i>Transfiguration of our Lord</i>	3 5:30 p.m. Mission Mtg 7:00 p.m. Deacon Mtg
9 <i>First Sunday of Lent</i> 11:45 a.m. Fellowship and Outreach Mtg.	10 5:00 p.m. Property Mtg. 6:00 p.m. Finance Mtg. 7:00 p.m. Stewardship
16 <i>Second Sunday of Lent</i> 11:45 a.m. "WPC & Me" New Member class 11:45 a.m. Game Gathering	17
23 <i>Third Sunday of Lent</i> 11:45 a.m. "WPC & Me" New Member class	24
30 <i>Fourth Sunday of Lent</i>	31

Tuesday	Wednesday	Thursday	Fri/Sat
	Westminster Community Pantry open 4 to 6 p.m. every Wednesday	Westminster Community Pantry open 10 a.m. to 1 p.m. every Thursday	1
4 10:00 a.m. Staff Mtg 10:00 a.m. Hearts & Hands Knitting 1:30 p.m. Book Study 6:00 p.m. Personnel Mtg. 6:00 p.m. Boy Scouts	5 <i>Ash Wednesday</i> 7:00 p.m. Worship Service	6 8:30 a.m. TOPS 5:00 p.m. Food of Faith at Messiah Lutheran 7:00 p.m. Lenten Devotional via Zoom	7
11 9:00 a.m. Matthew 25 Cafe 10:00 a.m. Hearts & Hands Knitting 1:00 p.m. Lions Club 1:30 p.m. Book Study 6:00 p.m. Boy Scouts 6:30 p.m. Spiritual Growth Mtg.	12 5:30 Worship Mtg 6:30 p.m. Chancel Choir Rehearsal 6:30 p.m. Confirmation	13 8:30 a.m. TOPS 5:00 p.m. Food of Faith at Messiah Lutheran 7:00 p.m. Lenten Devotional via Zoom	14
18 10:00 a.m. Staff Mtg 10:00 a.m. Hearts & Hands Knitting 1:30 p.m. Book Study 6:00 p.m. Boy Scouts 6:30 p.m. Session Meeting	19 5:30 p.m. Contemporary Choir 6:30 p.m. Chancel Choir Rehearsal 6:30 p.m. Confirmation	20 8:30 a.m. TOPS 1:00 p.m. Lydia Circle 5:00 p.m. Food of Faith at Messiah Lutheran 7:00 p.m. Lenten Devotional via Zoom	21
25 10:00 a.m. Log Folding 10:00 a.m. Hearts & Hands Knitting 12:00 p.m. Lunch and Learn 1:30 p.m. Book Study 6:00 p.m. Boy Scouts	26 5:30 p.m. Contemporary Choir 6:00 p.m. Mid-Lenten Potluck 6:30 p.m. Chancel Choir Rehearsal	27 8:30 a.m. TOPS 1:30 p.m. Coffee and Conversation 4 p.m. Deborah Circle 5:00 p.m. Food of Faith at Messiah Lutheran 7 p.m. Lenten Devotional via Zoom	22
			28
			29

*Birthdays listed are for our 75+ Members

Treasurer’s Report

In January, the **Operating Fund** had income of \$22,289.27 and expenses of \$34,777.19. The shortfall for the month was covered with investment funds income

The **Building Improvement Fund** received \$640 in contributions and had no expenses. As of the end of January, the Fund has a balance of \$14,642.43. The **Major Repairs Fund** received \$414 in contributions and incurred expenses of \$4,738 for boiler repairs. The Fund balance was \$39,556.69 at January 31. We appreciate your continued contributions to these Funds.

The **Capital Campaign Fund** received \$1,244 in contributions in January. The loan balance is down to \$33,267.47 as of January 31.

If you have any questions about these figures or anything else finance-related, please contact me via email or by leaving a voicemail message.

Pat Foster
Financial Administrator
treasurer@wpcbc.org
616-485-8272 (cell phone)

FELLOWSHIP TIME

Join your church family for a time of fellowship before and after Sunday’s worship service.



Coffee and donuts included!



If you’ve ever wondered why the line to exit the sanctuary gets a little backed up now and then during the months of April through October, its probably because Judy and Pastor Jamie are catching each other up on their favorite non-Detroit baseball teams. We couldn’t think of a better way to celebrate the light of God we see in Judy than to spell it out using her beloved CUBS.



Judy is:

Compassionate – She cares deeply for others, helping in the food pantry, at the Good Samaritan Rescue Mission, and serving as a Deacon.

Unselfish – She gives generously of her time and resources to the church and community.

Blossoming – Judy has tenderly cared for the courtyard flowers and the Nate Doan Park flowerbed for many years. Did you know she brings her own jugs of water to nourish the flowers at the park and the church entry doors? Be sure to ask her about her favorite gardening tool!

Steadfast – Judy has been a faithful member of the Mission Partnerships Committee for many years and has also served multiple terms as an Elder and Deacon.

Thank you, Judy, for shining your light! Go, Cubs, Go!

ASH WEDNESDAY
(March 5, 7:00 PM)
intention & action (Luke 9:51-62)
Jesus sets out for Jerusalem
The “would-be followers” have good intentions. They want to follow Jesus, but Jesus calls them to put their money where their mouths are. Somewhere between good intentions and impulsive action lies discipleship. On Ash Wednesday, we make a commitment to align our intentions and our actions.

THE FIRST SUNDAY IN LENT
(March 9)
stranger & neighbor (Luke 10:25-37)
Parable of the Good Samaritan
This parable begins and ends with the question, “Who is my neighbor?” and the answer is, surprisingly, “the stranger.” The Samaritan, whose place of worship and customs are different from the scribe who questions Jesus, is both a stranger and a neighbor to the man who was beaten and left in a ditch. In our world, many of our physical neighbors are strangers to us, and many of our neighbors—those closest to us—feel like strangers in divisive political climates. If we align our intentions and actions, then maybe we need to reconsider who we consider “stranger,” and ask ourselves if we have acted as good neighbors.

THE SECOND SUNDAY IN LENT
(March 16)
faith & works (Luke 10:38-42)
Mary & Martha host Jesus
In many translations, Jesus says that “Mary has chosen the better part,” which has been used to create a divide between Mary and Martha. However, in the Greek, Mary has chosen the “good portion,” and Martha’s tasks are called “ministry.” Therefore, perhaps Mary represents our faith, our desire to know God intimately, and Martha represents our good works, our desire to transform the world. Both are needed, and both are good.

THE THIRD SUNDAY IN LENT
(March 23)
rest & growth (Luke 13:6-9)
Parable of the fig tree
The gardener in the vineyard knows the fig tree needs rest, nutrients, and time—and it also needs to produce fruit. Both things are true, which is also true for us. If

we are always striving for more growth without taking time to rest, we will burn out. But if we are only ever resting, we won’t bear fruit or grow. The fig tree also teaches us that the in between time—of nurture before fruit—can be where transformation begins.

MID-LENTEN POTLUCK, WORKSHOP, AND PRAYER SERVICE
(March 26, 6:00 PM)
On Wednesday, March 26th, we will gather in the Fellowship Hall for a potluck dinner. After the meal, there will be a Lenten themed activity for everyone to work on, followed by a brief prayer service. Please bring a dish to share and plan to join us for this special worship and fellowship event for all ages. This is a great opportunity to invite a friend to join you!

THE FOURTH SUNDAY IN LENT
(March 30)
lost & found (Luke 15:1-7)
Parable of the Lost Sheep
Herding sheep is a never-ending task. As soon as one is found, another may go missing. Our lives have a similar ebb and flow—in one moment we might feel like we have it all together, and in the next, we’re struggling to survive. The promise of this parable is that no matter how “lost” we feel, the Good shepherd is by our side.

THE FIFTH SUNDAY IN LENT
(April 6)
righteousness & mercy (Luke 19:1-10)
Zacchaeus greets Jesus
The crowds grumble at Jesus’ self-invitation to stay with Zacchaeus, and their righteous indignation isn’t without cause. As a tax collector, Zacchaeus has extorted money and acted in collusion with the empire, using his position to oppress his own people. It is important to call out oppression, and yet, Jesus offers mercy. That mercy then begets more mercy as Zacchaeus, unprompted, offers to return what he took, and then some.

PALM / PASSION SUNDAY
(April 13)
shouting & silence (Luke 19:29-40)
Jesus enters Jerusalem
Jesus doesn’t instigate his own parade. Instead, just his quiet presence alone inspires the multitude to shout out and

praise God. When the religious leaders try to silence the crowd, Jesus tells them that the noise level isn’t the point—even the stones would cry out if they were silent. It takes wisdom to know when our voice is needed and when it’s just noise.

MAUNDY THURSDAY
(April 17, 7:00 PM)
power & humility (Luke 22:1-27)
Last Supper
In his final hours, Jesus redefines power through acts of humility, including sharing a final meal with his closest friends and those who will soon betray him. After breaking bread, the disciples argue about who is the greatest, but Jesus tells them that the greatest must be the least and the leader must be the servant, turning their hierarchy on its head. According to Jesus, humility is powerful, and real power is shown through humility.

GOOD FRIDAY
(April 18, 7:00 PM)
acceptance & resistance (Luke 23:32-49)
Jesus dies alongside a penitent thief
As Jesus dies on the cross, one thief resists him and the other accepts him as Messiah. Jesus resists the empire but accepts his fate. We also are called to resist systems of power and oppression, and yet we ultimately have to accept that Jesus dies—and one day we will too. We have to discern what to accept as given and what to resist, what is “God’s will” and what is the result of our own unquestioned systems.

EASTER SUNDAY
(April 20)
grief & hope (Luke 24:1-12)
The women grieve and Peter runs to the tomb
Grief is a healthy response to Jesus’ death and a valid way to enter worship on Easter morning. And yet, the women at the empty tomb are given hope amidst their mourning. The other disciples don’t believe the women’s message, but Peter, living in the in-between of grief and hope, runs to the tomb to see for himself. Grieving doesn’t have to make us hopeless. Hope can compel us to take action when we are deep in grief.

Theme and Series Resources prepared by © A Sanctified Art | sanctifiedart.org and used with permission.

With Sympathy



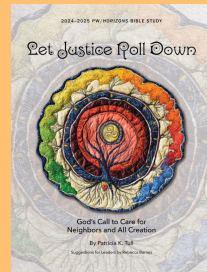
Prayers and sympathy of the congregation are extended to the family and friends of Carol Lange. Carol passed away January 31, 2025.

With Sympathy



Prayers and sympathy of the congregation are extended to the family and friends of Ross Brown. Ross passed away February 13, 2025.

LYDIA CIRCLE THURSDAY, MARCH 20TH 1:00 P.M.



Lydia Circle will meet monthly in person on the third Thursday at 1:00 p.m. in the Session room. We are using the *Horizons* Bible Study, Let Justice Roll Down.

DEBORAH CIRCLE THURSDAY, MARCH 27TH 4:00 P.M.

Deborah Circle will meet at 4 p.m. on Thursday, March 27th at the home of Sherry Holley. We will enjoy a light snack and watch an episode of *The Chosen* together.

Fellowship Time hosts needed!

Are you interested in hosting Fellowship Time, but curious as to what is involved? We've made a few adjustments to make it easier on our hosts!

The Fellowship and Outreach Committee now provides everything you need each Sunday — doughnuts, coffee, lemonade, and cookies — all we need is help serving them.

Fellowship Time is held each Sunday morning from 9:30 to 10:15 a.m. in the Fellowship Hall and following worship in the chapel. This is a great way for our church family to stay connected with one another and welcome visitors to our church!

You can sign up on the volunteer board in the Wenona Street lobby. If you'd like to bring your own treats, just let Joyce Hegenauer know before it's your turn to serve.

Thank you!

Dear Westminster Family,



You took me by surprise on February 2nd, recognizing my service as your Clerk of Session. I can't thank you enough for the lovely gifts and the "standing ovation."

I've enjoyed being your Clerk over the years. Thank you again.

Love to you all,

— Jan Witucki

Consider becoming a food pantry volunteer

Like many other things, it takes a village to get the task done. The same can be said about the Westminster Community Pantry. A wonderful group of volunteers work during Pantry hours. But we have other areas that can use volunteer help.

The Pantry truck crew helps to bring food to the Pantry, most often from the Food Bank of Eastern Michigan (FBEM), but sometimes from other donation sites.

The drivers meet the FBEM semi at Landaal Packaging Systems every other Monday at 9:15 a.m. to receive our bi-monthly order. The order is unloaded from the semi truck and put in the trucks that are waiting.

After the food has been delivered and unloaded at the Pantry, it needs to be unpacked and placed on the shelves, in the refrigerator or in the freezer. This is

March Item of the Month! Breakfast Cereal

Thank you for your donations of chunky soup and can openers! All was greatly appreciated by our guests!

done by the stocking crew, and volunteers are always welcomed.

Every Wednesday at 12:30 p.m. the Pantry receives a delivery from Hidden Harvest. This is especially interesting because what we receive is always a surprise. DELIVERY includes: bread products, refrigerator items, fresh vegetables and fruit and, often, donuts and cookies from Barney's Bakery. Once unloaded, the items are stocked in the Pantry.

Not everyone is able to help during the Pantry's open hours, so

volunteers are always welcome to help with these other things.

Special thanks to our drivers who help fill the pantry: Phil Reagh, Chris Elzinga, Charlie Case, Buzz West, Randy Thibo and Steve Kusterer. Thanks also to David Crook and Kelly Larive who are always there to help unload the trucks.

Westminster Community Pantry open hours are: Wednesday, 4 to 6 p.m. and Thursday 10 a.m. to 1 p.m. Volunteers are always needed and welcomed!

CORRECTION

In the February Log we incorrectly thanked Marlette Chiropractic instead of Maillette Chiropractic for their food drive which provided a carload of food to the Pantry. Thank you again to Maillette Chiropractic for their generous support.

Volunteers sought for Sleep in Heavenly Peace bed build April 12

Mission Matters: If you are looking for a wonderful volunteer experience, please note that Westminster is again sponsoring a full bed build for the Sleep in Heavenly Peace organization. The date is the morning of **April 12** from 8:45 until roughly noon. We'll have a lunch afterwards in the break room at Delta. Sleep in Heavenly Peace (SHP) is a national non-profit organization that makes handmade bunk beds for needy children who do not have a bed of their own. We are teaming up with First Presbyterian Church to fully staff one bed build day which will require 50 to 60 volunteers. No



construction skills are required, and SHP provides training and all tools and equipment. Location will be at Delta College. This year, Delta is requiring volunteers to be 18 or older.

In order to sign up, you need to use the QR code below.

Spaces are limited, so if you are interested sign up soon. More

information will follow. Contact Len Petroff, Darlene Kusterer, or Bonnie Marsh if you have questions.





Thank you to everyone you donated baked goods for the Youth Bake Sale. We raised more than \$400 which will be used for future youth events!



February 2nd was a busy day for members of Westminster. First came the annual meeting during the morning worship service, then the Souper Bowl of Caring and bake sale, and wrapped up in the evening with a group attending the Saginaw Spirit's Faith Night.

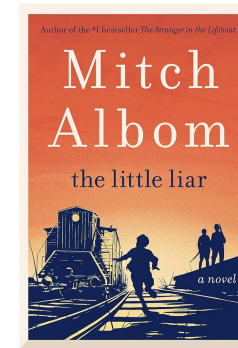


New Book Study in March

We are excited to announce a new book study beginning in mid-March, featuring Mitch Albom's acclaimed book, "The Little Liar."

This engaging study will provide a deep dive into the book, offering us an opportunity to explore its lessons and insights in a group setting.

This is a powerful novel of hope and forgiveness that moves from a costal Greek city during WW2 to America in the golden age of Hollywood, as the intertwined lives of three young survivors are forever changed by the perils of deception



and by the power of love to ultimately redeem us. Our book studies continue to be held at 1:30 p.m. in the Lounge and we meet for about 1 hour. We invite you to join us as we journey through "The Little Liar," discussing its impact on our personal and spiritual

lives. Copies of the book will be available in the church office.

Please reach out to Rev. Linda if you have any questions or need further information. We look forward to seeing you there and engaging in meaningful discussions together.

New Community Fellowship Opportunities: *Enriching Our Spiritual Journey Together*

In addition to our enriching Bible studies and book group, we are excited to introduce new opportunities for camaraderie and fellowship within our community. One such activity is the game Bunco, a fun and easy-to-learn dice game that provides an excellent way to meet new friends and strengthen existing relationships. We will be organizing monthly Bunco gatherings in the Fellowship Hall, where everyone is welcome to join in on the laughter and friendly competition. No prior experience is needed, and we will provide all the necessary materials. We are hoping to have at least three tables of four. Please let us know of your interest in joining in this fun opportunity.

Moreover, we are launching the "Out to Lunch Bunch," a group

dedicated to exploring local eateries and enjoying good food and company. This will be a fantastic opportunity to socialize and discover new favorite spots while supporting local businesses. Each month, we will select a different restaurant to visit, and everyone is welcome to suggest their favorite places.

Both of these activities are designed to foster a sense of community and belonging, enhancing our collective spiritual journey through shared experiences and mutual support. For more information or to express your interest in these activities, please contact the church office or Rev. Linda.

Stay tuned for dates & times.

Game Gathering and Perpetual Puzzle Place

Do you enjoy playing games with friends? Perhaps you are competitive, maybe you enjoy the strategy behind a good game, or you just play for fun? Maybe you just want to join others around a table for a good chat and a delicious snack.

After a break during the busy winter months, Westminster's Game Gathering is back! Following worship on Sunday, March 16, you're all invited to pull up a chair in the Fellowship Hall, choose a couple of partners and play! We'll have some games on hand, but feel free to bring your favorite card game, strategy game, or something else you think we'll love. Those joining in on the fun are also invited to bring a snack or finger food to share.

With so many activities happening in the Fellowship Hall over the last few months, there hasn't been much room for our puzzle table, but we're making room to bring it back!

The Perpetual Puzzle Place will be set up in a corner of the Fellowship Hall with a new puzzle, each time one is completed. Feel free to work on it Sunday mornings or anytime you are in the building!

A Little Bit About Grief

What is grief? What is mourning? Are they different?

Grief is the internal process of loss. It's not what you show to others; it is personal to you. Imagine a broken rib. It's painful to take a breath, but to others, you may look okay. This is what grief is like; you may hurt "on the inside" but seem okay to others.

Mourning, on the other hand, is grief expressed. It can show up in tears, in a mood, and our words and body language. It is in mourning that sometimes people make the mistake of comparing loss. "My grief isn't as bad as hers," you might think. This is a myth of grief – that it can be compared. Your grieving is unique to you, and your loss is the most painful one because it's the one you have.

Grief, a Universal Yet Unique Experience

No two people grieve the same way or even in the same timeline. For some people, grief can hit fast and hard, and talking about it, sometimes over and over, is very helpful. For others, grief gets put in a backpack of emotions to be dealt with in the future—or with the intent never to deal with it. This can work until that backpack gets too full. Grief will find us eventually.

Sometimes, Grief is Suffocated

When your normal grief reactions are not welcome, you may experience 'suffocated grief.' Children, for example, may express grief by being distracted, regressing to previous behaviors when they were younger, being 'disruptive,' or just generally having a hard time expressing emotions when and where it seems 'appropriate.' This can also be true for adults, especially if you are feeling the need to hide your emotions, feeling pressure to 'move on' quickly, or feeling guilty for still feeling sad after a significant amount of time. When this type of grieving is misunderstood, it can be considered 'suffocated.'

Talking Is Not Required

It is a myth that grieving requires talking with other people about it. Some people journal, spend time in nature, or do something physical

Grief is Love — Except when it isn't

Some people say grief reflects love. It's the "receipt" we take for love. It is love's frustration of where to go. But grief can also be love never realized. It's also true that:

- Grief can be the absence of love.
- Grief can be the love we deserve, but we didn't receive.
- Grief can be love that disappeared.
- Grief can be the love we imagined would be ours but never came.

There are many reasons why people grieve. Relationships are complex, and sometimes grief is a reflection of what we didn't get to experience and wished we had.

to relieve grief. If you aren't sharing your grief with others, that is ok. That said, some find that talking with others does help. It can be a reminder that others have experienced grief and loss, too, and it provides an opportunity to learn what helped them cope.

Grief Doesn't Need to be Fixed

Most people need grief to be witnessed, not fixed. If you don't have someone in your life who is willing to witness your grief, consider joining a support group. A good grief support group will offer you a place to express your grief, witness the grief for other people, and share what is helping.

Provided by St. Luke's Hospice Bereavement Program, Bethlehem, PA

We would like to remind everyone of our monthly ***grief group meeting*** on **Thursday, March 27th at 1:30 p.m.**

This is a valuable opportunity to be with others who understand the journey of mourning. Though each person's grief process is unique, sharing this time together can provide comfort and support.

Lunch & Learn:

You may have noticed that we had to make a last minute change of plans with our February and March speakers. In February we enjoyed a presentation by Kristin Freeman about resources available to us through the Bay Country Library system.

And so in March we have rescheduled a local physical therapist from MyMichigan Bay City Therapy department. He will join us to share valuable tips and advice tailored specifically for seniors.



His presentation will cover essential topics such as maintaining mobility, preventing falls, and incorporating simple exercises into daily routines to enhance overall well-being. This

session is designed to empower seniors with practical knowledge to stay active and healthy.

Join us on **Tuesday, March 25th, at noon** in the Fellowship Hall. We will again order sandwiches from a local deli, Wanigan's, placing a group order, but people will be choosing and paying for their sandwiches individually. Of course, you are welcome to bring your own bag lunch from home.

Any questions, please call the church office or Rev. Linda.

WPC and Me! (New Member Inquiry Class)

Have you been participating in the life, worship, and work of Westminster and want to know more about what it means to become a member of the church? You are invited to attend our new member inquiry classes!

We will hold two classes following worship on Sundays, **March 16 and March 23**, in the Conference Room. Participants will learn about the PC(USA) (our denomination) and what it means to be an active member of Westminster Presbyterian Church.

There is no obligation to join the church after taking the class, but the classes are required for those who would like to become members.

Please let Pastor Jamie (pastor@wpcbc.org) or the church office (989-686-1360) know if you are interested in attending or know of someone who might be. Lunch will be served.

HELP! WE NEED SOMEBODY....

Actually, we need a few "somebodies." **Hearts & Hands of Westminster** has been knitting and crocheting items for several causes for over 20+ years, I think. Since we began with a bag of yarn that Sharon Hignite found waiting to be sold at the PW rummage sale, we have made hats, mittens, lap robes, prayer shawls, pocket prayer shawls and angels, bed socks, scarves, many kinds of baby items, and dish cloths. The items we make are given to organizations helping the homeless, anyone in need of hats and mittens, chemo patients, and our Mother's Day Baby Shower, just to name a few.

We have received donations of yarn and money from people outside our church, church ministries, our church members, and from members of H&H. Now we need people.

We have lost a few of our members and are finding it difficult to produce as many items as before. However, the need is just as great, or even greater.

If you knit or crochet or know someone who does, we would welcome new members. We meet at 10 a.m. on Tuesday mornings in the Session Room. If you are unable to meet with us at that time, items could be made at home and brought to the church. We have yarn and even a few hooks and needles. So, if you need supplies, just let us know. You may use any pattern you wish.

If you are someone who sews, we would welcome baby blankets, receiving blankets, and burp cloths for the Mother's Day Baby Shower.

Thank you, Westminster Presbyterian Church family, for all you have done in the past. Thank you for any help you can give now!

Hearts & Hands of Westminster